



Bohemian Rhapsody

Lyricist / Composer : Freddie Mercury
Artists : Queen

Solo piano

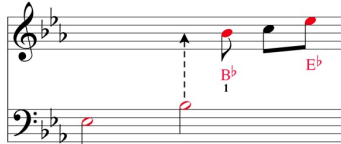
Level 2

Reading aid

Made to be Played

Interpreting the reading aid

The arrows indicate when to play with the left hand



Note names: E^b B^b

The red-colored notes are played on the black keyboard keys

The numbers indicate which finger plays the note (1 = thumb)

The rests and ties have been purposefully removed to make the sheet music easier to read, to focus only on the notes to be played. To establish the rhythm, consult your sheet music without "reading aid" or download the audio extract from noviscore.com for guidance.

$\text{♩} = 70$

A Introduction *Freely...*

Is this the real life is this just fan - ta - sy caught in a land - slide no es -

B^b+D+F B^b+E $D+F$ $F+A+E^b$ $G+B^b+E^b$

$G+D$ $G+C$ $F+C$

Use pedal...

cape from re - a - li - ty o - pen your eyes look up to the skies and see

B^b+D $F+B^b$ $F+B^b+D$ A^b+D $D+F$ B^b+G

$F+B^b+D$ G D G B^b B^b+A^b B^b

$I'm$ just a poor boy I need no sym - pa - thy be - cause I'm

G B^b A^b+C E^b B^b+E^b+G $A+F$ $A+C$

E^b E^b $C+G$ $F+E^b$ $F+A$

Bohemian Rhapsody

(page 2/8)

Solo piano

Level 2

noviscare.com

Reading aid

ea - sy come ea - sy go lit - tle high lit - tle low a - ny way the wind blows

Chord diagrams: C^b+G^b (1 4), B^b+F (2 5), $A+E$ (1 4), C^b+G^b (1 4), B^b+E^b+G (1 2 4), $D+B^b$ (2 5).
Bass line: E^b (2), D (1), $C^\#$ (2), E^b , D , $C^\#$, E^b+E^b , $D+D$.

does - n't real - ly mat - ter to me to me

In tempo...

Chord diagrams: $G+B^b+E$ (1 2 4), $A+C+E^b+F$ (1 2 3 5), $A+C+E^b$ (2 3 4), B^b , G (5), B^b , F (1), B^b , D , $C^\#+C^\#$, $C+C$, B^b (5), F (1), B^b (2).

Verses 1/2

B Ma - ma too late just my time as gone killed a man put a gun a - gainst his head pulled my bo - dy's

Chord diagrams: $F+D$ (1 4), G (5), B^b (2), $G+C$ (1 3), A (5), C (1), $C+E^b$ (1 3), B^b (5), F (1), B^b (2), D , G (5), G (1), B^b (2), D , C (5), C (1), G (4), D (2).

trig - ger now he's dead Ma - ma life had just be - gun but
a - ching all a the time good bye everybody I've got to go got to

Chord diagrams: B^b+E^b (2 4), $A+C$ (1 2), $F+D$ (1 4), G (5), D (1), F (2), $D+A$ (1 4), B^b+E^b (2 4), C , C , F , A , B^b (5), F (1), B^b (2), D , G , G (1), B^b (2), D .

now I've gone and thrown it all
leave you all be - hind and face

Chord diagrams: $C+E^b+B^b$ (1 2 5), G (5), B^b+E^b (1 3), $C+C$, C^b+C^b , B^b+B^b .

The complete sheet music is available on our site noviscare.com