



Bohemian Rhapsody

Lyricist / Composer : Freddie Mercury
Artists : Queen

Accompanying piano

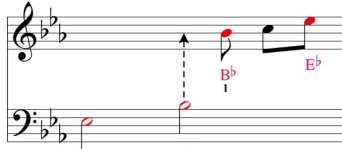
Level 3

Reading aid

Made to be Played

Interpreting the reading aid

The arrows indicate when to play with the left hand



Note names: E^b B^b

The red-colored notes are played on the black keyboard keys

The numbers indicate which finger plays the note (1 = thumb)

The rests and ties have been purposefully removed to make the sheet music easier to read, to focus only on the notes to be played. To establish the rhythm, consult your sheet music without "reading aid" or download the audio extract from noviscore.com for guidance.

$\text{♩} = 70$

1st sung note = F

A Introduction *Freely.....*

Is this the real life is this just fan - ta - sy caught in a land - slide no es -

cape from re - a - li - ty o - pen your eyes look up to the skies and see

I'm just a poor boy I need no sym - pa - thy be - cause I'm

Bohemian Rhapsody

(page 2/8)

Accompanying piano

Level 3

noviscore.com

C^b = B[#]

Reading aid

ea - sy come ea - sy go lit - tle high lit - tle low a - ny way the wind blows

Musical notation for the first system, including treble and bass staves with chords and fingerings. Chords: Eb+G^b+C^b (2 3 5), D+F+B^b (1 2 4), C[#]+E+A (1 2 5), Eb+G^b+C^b (1 2 3 5), D+F+B^b (1 2 4), C[#]+E+A (1 2 5), Eb+G^b+B^b+Eb (1 2 3 5), D+F+B^b+D (1 2 4 5). Bass line includes Eb, Eb, D, D.

does - n't real - ly mat - ter to me to me

In tempo...

Musical notation for the second system, including treble and bass staves with chords and fingerings. Chords: C[#]+E+B^b (1 2 5), C+E^b+F+A (1 2 3 5), C (1), Eb (1), F+A+C+E^b (1 2 3 4), B^b+D (1 2), G+G, F+F, B^b+D, G+G, F+F. Bass line includes C[#], C[#], C+C, F, B^b, D, B^b+B^b (5), B^b, D, B^b+B^b (5).

B

Verses 1/2

Ma - ma too late just killed a man my time as gone put a gun against his head pulled my bo - dy's

Musical notation for the third system, including treble and bass staves with chords and fingerings. Chords: B^b+D (1 2), G+G, F+F, B^b+D, A+A, G+G, Eb+G, D+D, C+C. Bass line includes B^b, F, B^b, D, G, B^b, D, C, C, Eb, G.

trig - ger now he's dead a - ching all the time Ma - ma good - bye everybody life had just be - gun but I've got to go got to

Musical notation for the fourth system, including treble and bass staves with chords and fingerings. Chords: Eb+G+B^b (2 4 5), C, Eb+A, F, C, D+B^b (1 4), G+G, F+F, B^b+D, A+A, G+G. Bass line includes C, F, B^b, D, F, B^b, D, G, B^b, D.

now I've gone and thrown it all leave you all be - hind and face

Musical notation for the fifth system, including treble and bass staves with chords and fingerings. Chords: Eb+G (3 5), C, C^b+E^b (1 3), B^b+Eb (1 3). Bass line includes C+C, C^b+C^b, B^b+B^b.

The complete sheet music is available on our site noviscore.com