



Mad world

Lyricist / Composer : Roland Orzabal

Solo piano

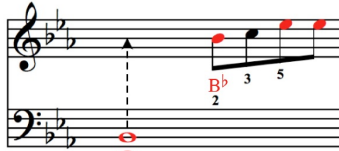
Level 2

Reading aid

Made to be Played

Interpreting the reading aid

The arrows indicate when to play with the left hand



Note names: E^b+B^b
5 1

The red-colored notes are played on the black keyboard keys

The numbers indicate which finger plays the note (1 = thumb)

The rests and ties have been purposefully removed to make the sheet music easier to read, to focus only on the notes to be played. To establish the rhythm, consult your sheet music without "reading aid" or download the audio extract from noviscore.com for guidance.

$\text{♩} = 87$

A Introduction

Musical notation for the introduction, showing treble and bass staves with chords and fingerings. Red notes indicate black keys. Fingerings are shown below notes. Chords are labeled below the bass staff.

Chords: G (3 5), B (5), F# (2), E (1), D# (1 2), G (3), B (5), F# (2), E (1), C# (1), E (2)

Bass staff: E (5), G+B (3 1), A (4), C#+E (2 1), E, G+B (3 1), A (4), C#+E

Use pedal...

B Verses 1 / 2

All a - round me are fa - mi - liar fa - ces worn out pla - ces

Musical notation for the first two verses, showing treble and bass staves with lyrics and chords. Red notes indicate black keys. Fingerings are shown below notes. Chords are labeled below the bass staff.

Chords: E (5), G+B (2 1), E (4), G (5), B+D (2 1), G (4), D (5), F#+A (2 1)

worn out fa - ces bright and ear - ly for their

Musical notation for the continuation of the verses, showing treble and bass staves with lyrics and chords. Red notes indicate black keys. Fingerings are shown below notes. Chords are labeled below the bass staff.

Chords: C#+A (1 4), A (5), E+A (2 1), E (5), G+B (2 1), E (4)

The complete sheet music is available on our site noviscore.com