



Comptine d'un autre été ... l'après-midi

Composer : Yann Tiersen

Solo piano

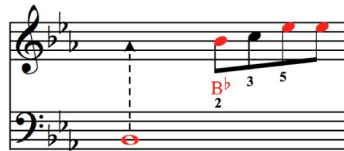
Level 2

Reading aid

Made to be Played

Interpreting the reading aid

The arrows indicate when to play with the left hand



The red-colored notes are played on the black keyboard keys

The numbers indicate which finger plays the note (1 = thumb)

Note names:

E^b+B^b
5 1

The rests and ties have been purposefully removed to make the score easier to read, to focus only on the notes to be played.

To establish the rhythm, consult your score without "reading aid" or download the score recorded in noviscore.fr for guidance.

$\text{♩} = 100$

A

For easier reading, remember that, in this score, an arpeggio formula played with the left hand is repeated.

Use pedal...

B

(The 2nd time, play the right hand an octave higher)

Note that, for the rest of the score, the left hand is identical to the left hand in part **A**

The complete sheet music is available on our site noviscore.com